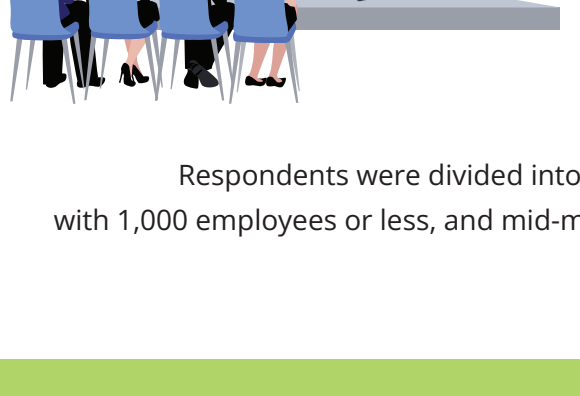


Tech Trends & Insights

The State of Cyberattacks



Summary of Top Findings



Surveyed over **650** IT professionals worldwide.

Respondents were divided into two groups: small and midsize businesses (SMBs) with 1,000 employees or less, and mid-market enterprises (MMEs) with more than 1,000 employees.

Cyberattacks have soared to new heights, striking organizations of all sizes with ever-increasing frequency and efficacy. This infographic explores how cyberattacks and data breaches are impacting today's hybrid cloud environments.



Cyberattacks: Damage Level



SMBs



MMEs

SUFFERED A CYBERATTACK IN THE LAST YEAR.

Of these, 60% of attacks against SMBs and 35% against MMEs occurred within the last six months.

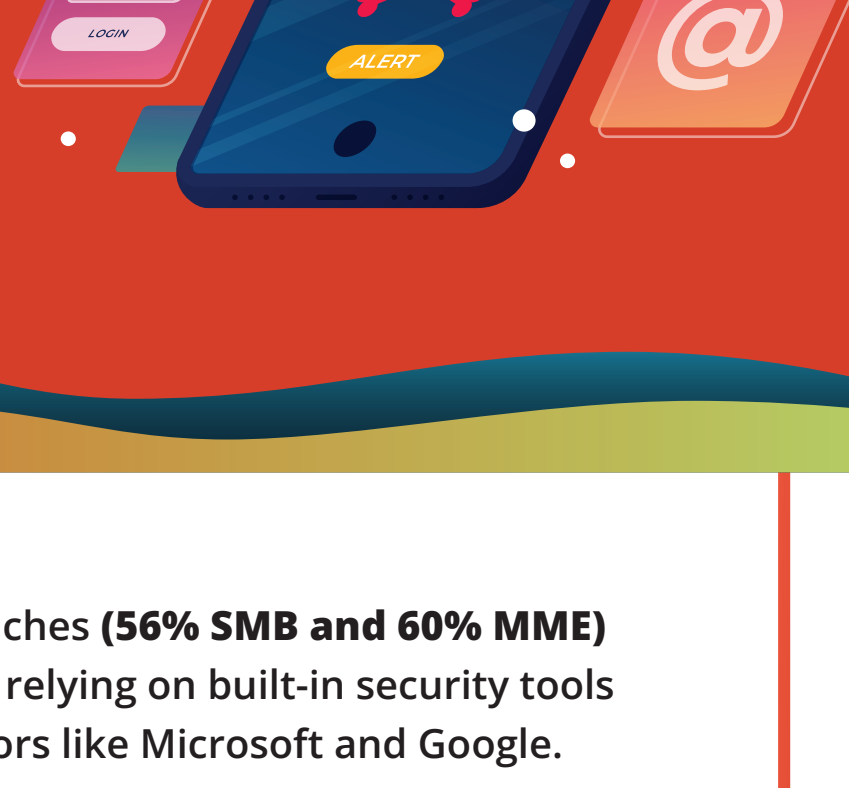
Nearly 65% of SMBs and 79% of MMEs report monitoring their networks for anomalous insider activity.

79% of reported SMB breaches and 85% of MME breaches occurred despite monitoring, suggesting that attacks originate externally and penetrate the network through other means.

Phishing

The Attack Vector of Choice for Cybercriminals

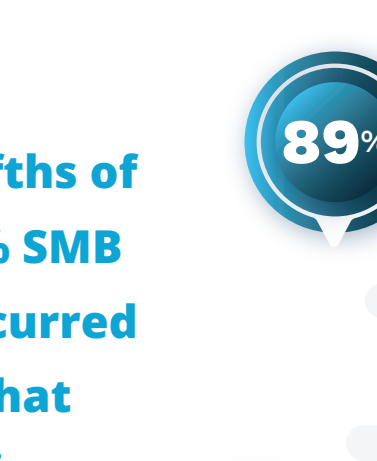
One of the most popular threat vectors today is phishing. As organizations continue to move to the cloud, opening more opportunities for threat actors, SaaS applications become major targets.



More than half of all breaches (**56% SMB and 60% MME**) occurred in organizations relying on built-in security tools provided by SaaS vendors like Microsoft and Google.



SMBs



MMEs

SUFFERED BREACHES DESPITE USING A SECURE EMAIL GATEWAY (SEG) SOLUTION.

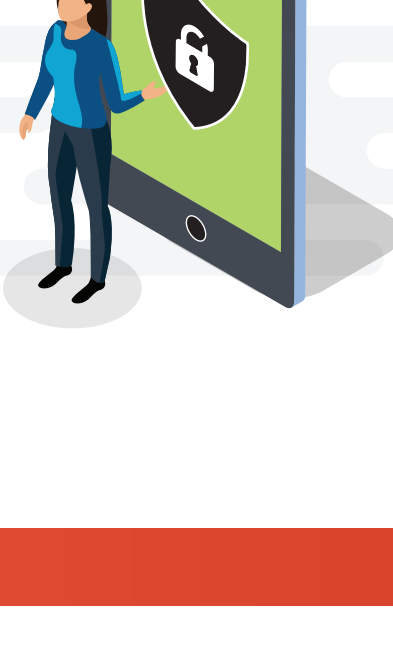
More than four-fifths of the breaches (89% SMB and 80% MME) occurred in organizations that reported conducting security awareness training.



SMBs



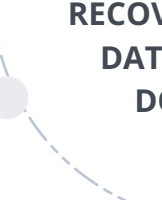
MMEs



Impact of a Ransomware Attack

Phishing attacks are often a precursor to a more severe cybersecurity event, such as a ransomware attack. With regard to ransomware, SMB sentiments trend slightly more positively than those of their MME counterparts.

If hit by a ransomware attack . . .



SMBs

ARE LIKELY TO RECOVER, BUT WITH DATA LOSS AND DOWNTIME



SMBs

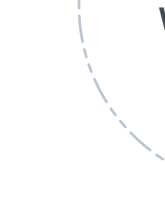
HAVE 100% CONFIDENCE IN RECOVERY



MMEs



MMEs



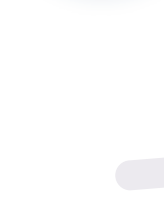
SMBs

CITED THEY WOULD BE IN BIG TROUBLE



SMBs

CONSIDER PAYING THE RANSOM



MMEs



MMEs



Cyber Insurance Adoption

Cyber insurance has been adopted by SMBs and MMEs at a similar rate. However, MMEs are keener on adopting cyber insurance in the future than their SMB counterparts.



SMBs

DON'T HAVE BUT ARE CONSIDERING



MMEs



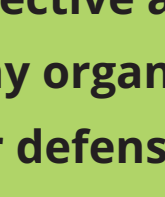
SMBs

HAVE CYBER INSURANCE

DON'T HAVE CURRENT PLANS TO PURCHASE CYBER INSURANCE



SMBs



MMEs

A singular solution is ineffective at stopping today's advanced threats. That's why organizations are turning towards a layered defense (or defense-in-depth) approach. Defense-in-depth uses multiple controls in series to safeguard systems and data from potential threats.

[Download](#)

Get the **State of BCDR infographic** to learn how companies are adapting to support hybrid workforces.

[Download](#)

In case you missed it, here's our **State of IT Security infographic** to learn more about the top threats businesses face today, and the steps taken to combat these threats.